

Installation Instructions & Use Recommendations

FMS Accessories – Assault Rifle Mount

These instructions must be read carefully and thoroughly **before** beginning work. FMS Solutions, LLC accepts no liability for damage caused by failure to observe the installation instructions or use recommendations.

Installation of this accessory does not change the factory specified load limits for the motorcycle. Always follow the motorcycle manufacturer's recommendations regarding load limits.



Caution: FMS Solutions, LLC (FMS) weapon mounts and Santa Cruz Gunlocks, LLC (SCG) are intended for temporary, secure storage of firearms. They are not substitutes for a permanent storage enclosure and only act as limited theft deterrents. And they will not prevent accidental discharge/firing of a chambered round. To properly and safely use the FMS weapon mounts with Santa Cruz gunlock:

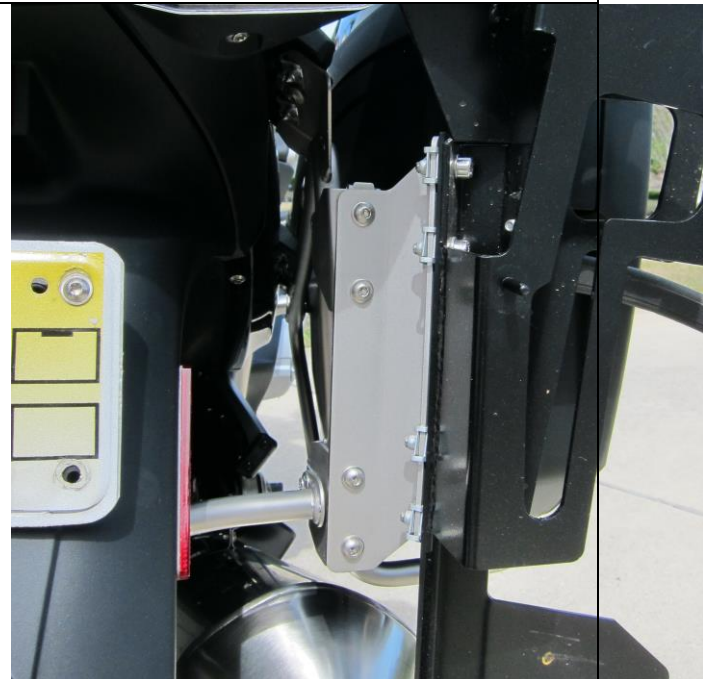
- **Your weapon mount must be fitted / adjusted to match the weapon being mounted.** It is possible that some weapons will not fit the mount correctly, based on variable components / accessories fitted to the weapon.
- Read and follow all installation instructions!
- Do not use if your firearm does not fit the weapon mount or gunlock properly
- Never leave your firearm unsupervised while using an FMS weapon mount and/or SCG gunlock
- Never place a loaded firearm in an FMS weapon mount and/or SCG gunlock
- Never chamber a round while using a FMS weapon mount and/or SCG gunlock
- It is the responsibility of the user to operate the FMS weapon mount and/or SCG gunlock properly and safely

All assault rifle and shotgun mounts require the installation of the shotgun / assault rifle mounting bracket. This bracket adapts gun mounts to the K52SF model, enabling the production of one version of each weapon mount and using this adaptor for the new models. There are three brackets available separate instructions.

Install the M6 nut clips on the saddlebag mount and the adaptor bracket as shown.

Note: M6 hex key bolts are used to secure the adaptor bracket to the saddlebag mount since they are exposed. **Important! Use red Loctite on these bolts so that they can never be removed!** The heads will strip when someone tries to remove them without first heating the nut clip to break the Loctite bond.

Utilizing the M6 hex key bolts (apply a thin coating of anti-seize to the bolts), sandwich the lower barrel support between the weapon mount and the mounting bracket. Install bolts loosely at first. Note that the hex bolt heads securing the assault rifle mount to the adapter bracket are blocked once the rifle is installed.



The gun lock and cable are provided in a separate box. Open the lock hasp and bolt the gun lock to the mount.

Note: Be careful not to pinch the cable under the gun lock ribs. FMS has hot-glued the cable splices in place to reduce the likelihood of this happening, but you must still use caution when bolting down the lock.

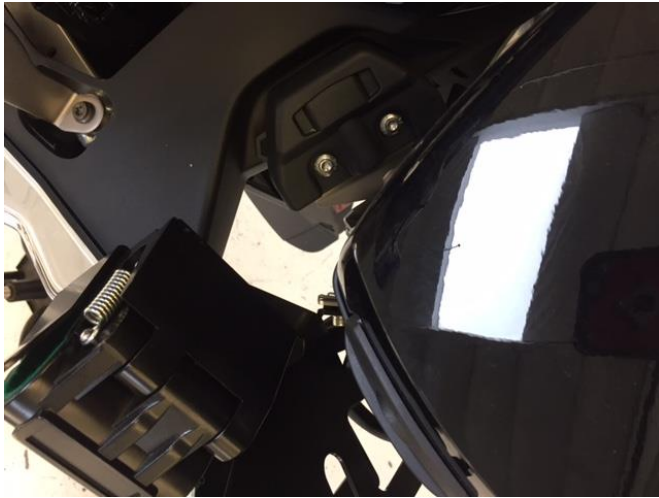
Note: Each lock already has internal shielding from Santa Cruz Gun Locks. Additional electromagnetic protection is incorporated on later rifle mounts from FMS.



Drill a hole in turn signal housing and route wire directly inside to leave no exposed wire.

Note: Place a cable tie around the wire cable just inside the entry hole to prevent the cable from being pulled-out.

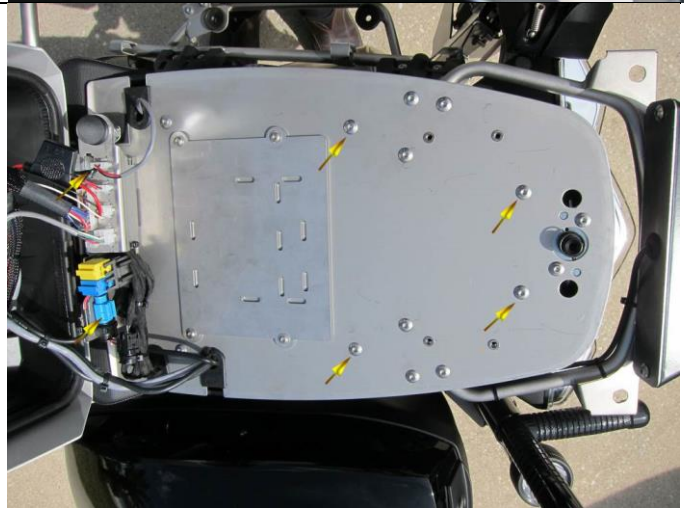
Note: Place a second cable tie on the cable as it surrounds the support post as an added security measure to prevent the cable from being pulled-out.



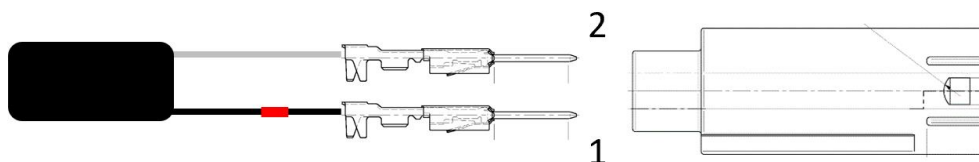
Remove the six bolts securing the radio box plate to the motorcycle frame. You do not need to remove the screws securing the lower trim panel to the radio box plate. **Note:** To remove forward screws, release the 8-pin helmet headset interface plug from the bracket to reach that screw.

Raise the rear of the plate up to gain access to the gun lock plug, placing a piece of wood between the trim and the tail light to hold the radio box plate up.

Note: The rear latch actuating cable may catch on the RH support when raising the assembly.

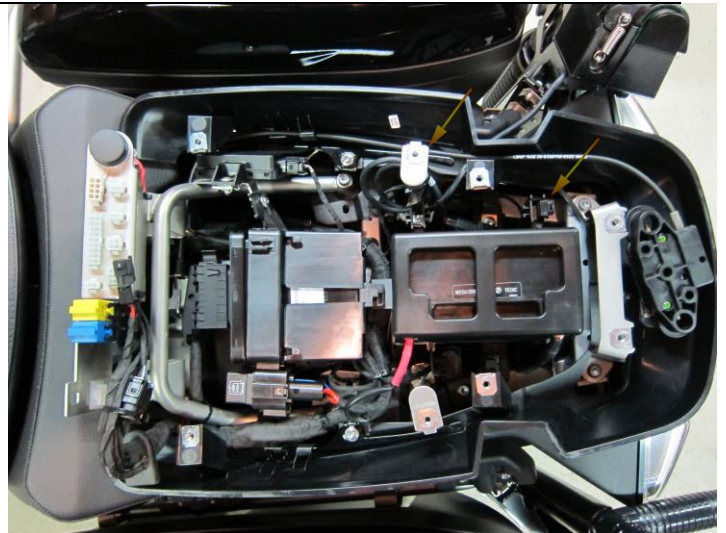


Install MQS housing on gun lock cable – the ground side goes into position 2 marked on the housing. The power side is position 1.



For clarity, the photo at right shows what is under the radio box lid. The right arrow shows the location of the gun lock plug prior to removal from the cable tie. Connect the gun lock cable to the plug and wrap the gun lock cable around the middle support.

Note: Cable tie the gun lock cable to the radio box floor plate support for added security to prevent the cable from being pulled-out at the gun lock.



For most builds, the rifle is not available at the time of installation. Request the measurement below from the agency. You need to know the distance from the muzzle tip to the center of the charging handle to be able to adjust the lower support leg correctly. If possible, have the agency stop by with a rifle to test that it is adjust properly prior to delivery.



Insert the muzzle of the weapon in the muzzle cup and slide the barrel support up or down until the magazine just clears the upper side of the magazine opening.

With the weapon in the mount, move the barrel support up or down until the charging handle is sitting squarely within the guard area with the muzzle resting firmly in the muzzle cup. Tighten four M6 hex bolts securely.



Note: The charging handle guard area is extra long and may need to be trimmed-back based on the size of the charging handle – otherwise the weapon may be scratched when installing or removing from mount. Trim with a cordless hacksaw, sand and then touch-up with black paint.

Ensure that the gun lock hasp closes completely with zero upward pressure from the rifle pistol grip!

The electro-magnetic lock retracts a plunger inside the hinge of the lock hasp. If the rifle is causing upward pressure that loads the hasp, the electro magnet cannot exert enough force to retract the plunger and the lock will not reliably open!

Lock Failure Will Occur if the gun lock hasp is “loaded” by pressure from the rifle pistol grip.

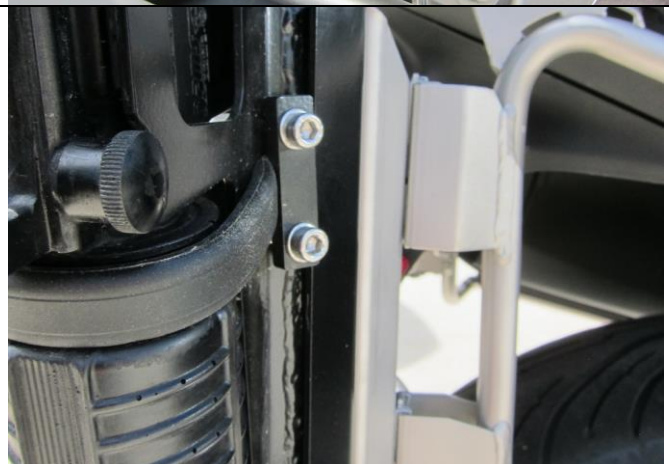
Lower the muzzle support slightly if the lock hasp does not close completely.



A rubber strap is provided to keep the weapon from vibrating in the mount as well as provide an added level of security.

Note: It is easier to make this adjustment with the saddlebag removed.

Adjust the rubber strap to the desired tension based on the forearm design of the weapon, tighten the two M6 bolts securing the strap and cut off the excess with a razor knife.



The gun lock release is actuated by the lower (unmarked) button on the RH “donut” switch cluster. The switch is active anytime the ignition is “ON” and for 30 seconds after ignition is turned “OFF”.

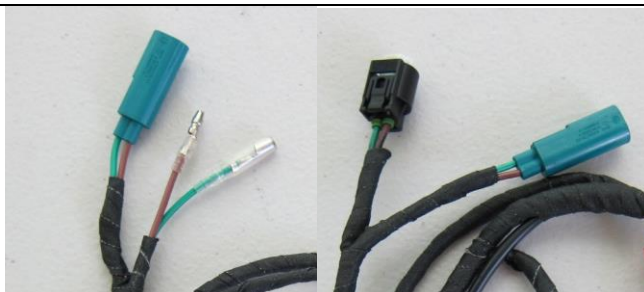
Anytime the gun lock release button is pressed, the GMSF will keep the line energized for 30 seconds (no need for a gun lock timer), providing the officer time to dismount and open the Santa Cruz gun lock securing the handle of the assault rifle mount. There is no adjustment of this energized time period.



Spare Parts: The Santa Cruz SC-1 gun lock is included with the assault rifle mount or shotgun mount system. The only part that can fail on the lock is the electromagnetic locking plunger assembly. That part is available through spare parts under BMW PN 65 14 2 163 697.



LAPD Rear Gun Lock Release: LAPD K52SF units are fitted with an additional release button at the rear of the motorcycle, together with an adjustable Gun Lock Timer via special request. Note that the terminals on the supplementary gun lock harness are specific to the LAPD rifle mount. Alternatively, a harness with the BMW terminals is available on the FMS Accessories website.



Feedback: Thank you for your purchase and we welcome your feedback as we too want to make every accessory exceed your expectations. Report any comments, suggestions, problems or concerns to FMS Solutions, LLC at info@fmsaccessories.com.

FMS Solutions, LLC Limited Warranty

FMS Solutions, LLC warrants to the first retail purchaser of new FMS Accessory products, to be free from defects in materials or workmanship, for a period of three (3) years from the original date of purchase as noted on the FMS Solutions, LLC invoice or original dealer invoice, except for paint and powder-coated finishes, which are warranted for the first 12 months only. LED lights from Fenix, Inc., Code 3, Inc. and Littlite are covered for 5 years by their manufacturer's respective warranties – processed through FMS Solutions, LLC.

This warranty extends only to the FMS accessory and does not include: damage caused by accidents or abuse; incorrect installation; labor to diagnose, remove, repair or replace; any consequential damage or loss of use. Any FMS Accessory suspected of being defective should be returned to FMS Solutions, LLC along with a copy of proof of purchase and warranty request form available on the FMS website. FMS Solutions, LLC will determine if the FMS accessory has a warrantable defect, and if so, will repair or replace the item and return it to the sender without charge. The decision to repair or replace said item is solely the prerogative of FMS Solutions, LLC.

Note: Police motors can operate in a very rough environment since police motors are a “tool”. They can be dropped, knocked-over, etc. without concern as the officer has a job to do and determines what is necessary at any given moment. Warranty is for defects in materials or workmanship. Therefore, the ability of an item to become broken or damaged does not mean it is warranty ... it just means it is broken or damaged and in need of repair or replacement. No manufacturer warrants their products to be indestructible. Any questions should be directed to info@fmsaccessories.com.